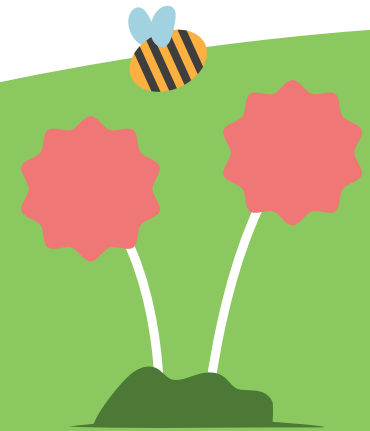




treedefi


Empowering the ESG cryptospace



treedefi.com



Index

- Five Ws 3
 - Treedefi, Treedefi Store & Treedefi Suisse 4
 - Treedefi Goals 5
 - COT, The Carbon Offset Token 6
 - NFTree, NFTForest and NFT Hedging 7
 - Tokenomics and the business side 8
 - Absorption Plan, Overview 9
 - Absorption Plan, Leased and/or Owned 10
- 



Five Ws

Who

treedefi.com is a **Decentralized Exchange** whose innovative ecosystem of services aims to being a reference in the crypto ESG market with AMM, liquidity pools, farming and soft commodities derivatives.

What

To access the DEx services the Treedefi's token, the **COT Carbon Offset Token**, is issued with a deflationary supply to enable users, investors and partners to access the services of the ecosystem.

Where

Treedefi operates across Switzerland, Caribbean, UAE and United Kingdom.

When

Treedefi and COT is being launched, among new and renewed services, in Q1/'23 avoiding an ICO and using an innovative dual-way token selling proposition based on **the e-commerce treedefi.store** and the smart contract based on treedefi.com (White Paper chap.2)

Why

To create through **fintech and blockchain technologies high-end financial instruments** to be used by SMB (Small Medium Business) agriculture, sea farms and any other soft commodities businesses.



Treedefi, Treedefi Store & Treedefi Suisse

treedefi.com

is a platform that operates in the field of cryptocurrencies market delivering decentralized exchange as well as DeFi protocols services.

On treedefi.com you can buy the COT token and being rewarded with 1kg of CO2 absorption, for every purchased token, for at least 5 years.

treedefi.store

is where the absorption service can be purchased with USD, EUR and many other currencies; absorption is certified using blockchain, GPS and contract disclosure.

On treedefi.store you can purchase the Absorption Service and being rewarded with 1 COT for every purchased kilogram of absorption.

treedefi.foundation

is the Switzerland institution that manages the contribution across the world for planting and research.

An institution whose legal framework is recognized across the world for support the research and pragmatic actions in the ESG market.



Treedefi Goals

The pursued goals are:

1
Absorb 150Mln Kilograms of CO2 in max 5 years

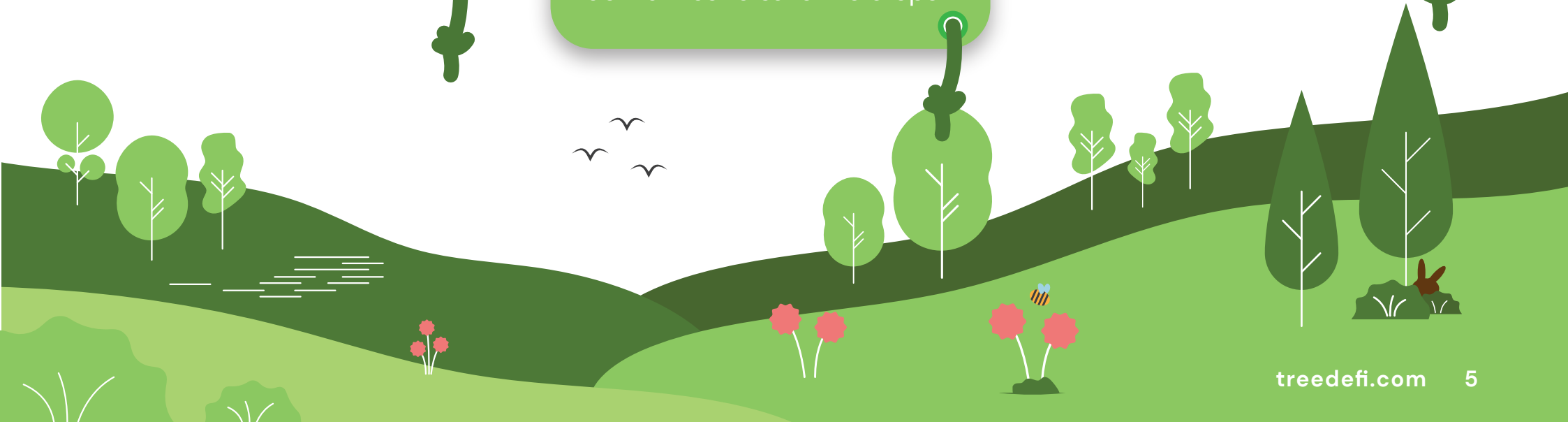
2
Being a crypto space reference in the ESG, #DeFi and #ReFi

3
Deliver financial blockchain services using distributed crypto economy

4
Enhance SMB (Small Medium Business) soft commodities companies to access DeFi & ReFi; today SMB agricultural and farms can not access derivatives to save the crops

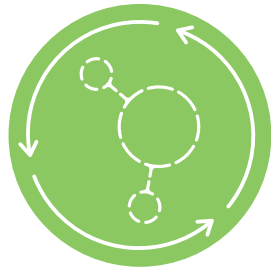
5
Contribute the research with "Greenathons" and increase the research in the field

6
Funding projects within the ESG and #ReFi crypto space market





COT, The Carbon Offset Token



COT

Treedefi services ecosystem has a specific token:

1. COT, Carbon Offset Token is the platform's utility token
2. Every COT represents 1kg of absorption for at least 5 years
3. COT is used for the value added services: DeFi protocols and derivatives
4. Enable ESG SMB (Small Medium Business) actors to access the crypto finance

Despite the market abuse of emitting uncollateralized tokens, COT has a tangible collateral directly sponsored by Treedefi.

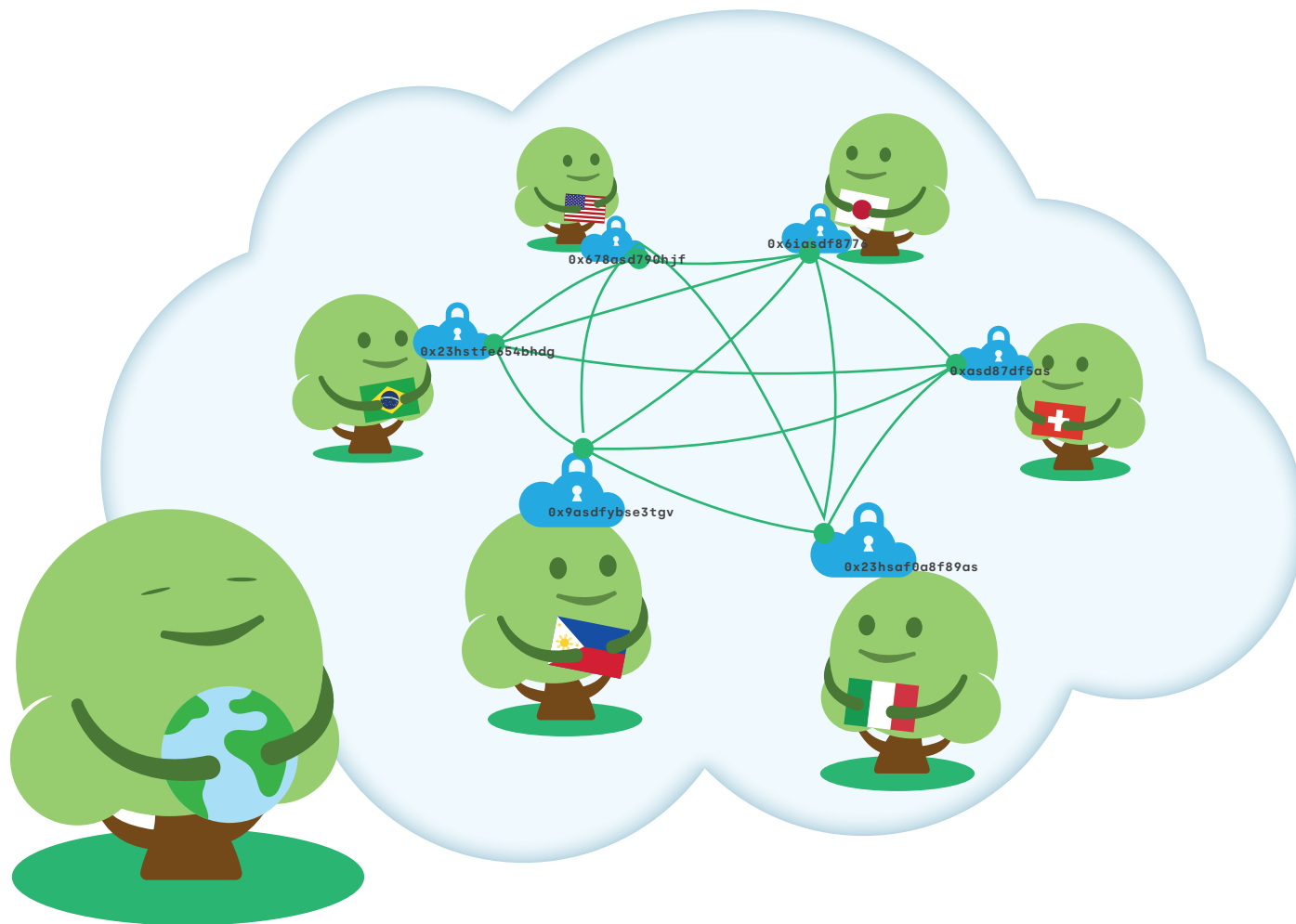
The collateral is represented by signed contracts, GPS, transactions and international accounting advising concerning :

- Land & Farms across the world
- Trees & Bushes already planted or to be planted
- Sea & Sea farming to clean oceans and seas



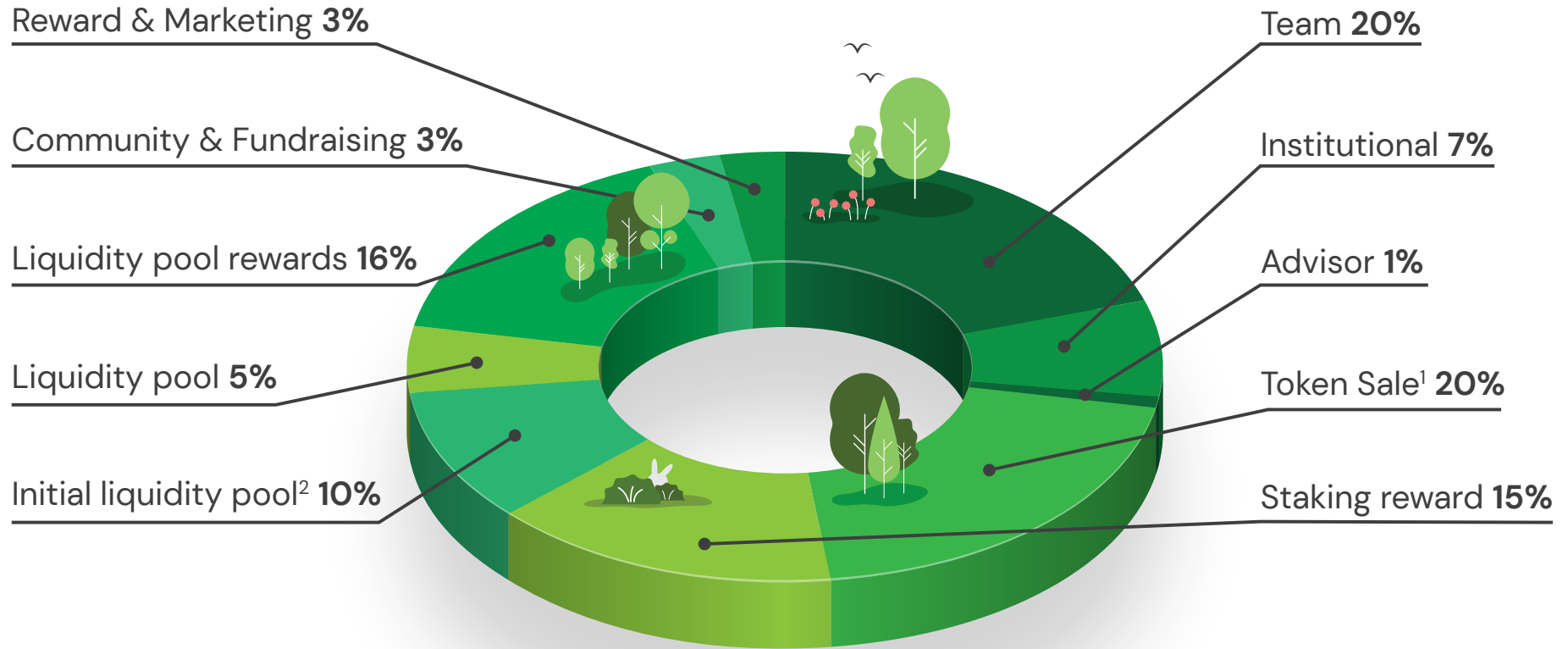
NFTree, NFTForest and NFT Hedging

- NFTree and NFTForest are representation, using NFT (Non Fungible Token), of a specific amount of real plants, geolocalized via GPS and officially documented, that are planted to absorb a specific quantity of CO2.
- NFTs are made to being officially (futurible) recognized by governments and states so that can be traded and used as a real and tangible asset.
- NFT Hedging is a financial procedure used to highly increase the amount of trees and bushes so that the number of CO2 absorption kilograms are always higher than the sold ones. This is made so that if any plantation suffered of fire/flood/etc... the quantity of sold absorption kilogram is unchanged.





Tokenomics and the business side



Revenue Stream

(1) Up to 20% of the total supply in proportion to the COT sale.

(2) Up to 10%, in any case in proportion to the result of the COT sale. The raised funds/revenues obtained from the token sale will, also, be used for the creation of the liquidity pool and, consequently, to give the first market price to the COT token; considering this last consideration, the launch price of the COT token in the Liquidity Pool as well as the quantity of allocated COT tokens will vary proportionally to the achievement of the assumed collection objectives in terms of token sale.

Fees/ Services	Dex	Liquidity Pools	Launchpool	Borrow/Lend	Derivatives	Farmers
Transaction						
Listing Fees						
Consulting						



Absorption Plan, Overview

The absorption plan includes 2 main paradigms:

Pragmas

- Land/Sea GPS public disclosure
- Public disclosure of production results
- Redistribute revenues into Pragmas

Ethics

- Planting trees, bushes and fruit trees to help local communities increasing the Social ROI
- Farming sea species for human nutrition and sustainable process
- Funding research project for local economies

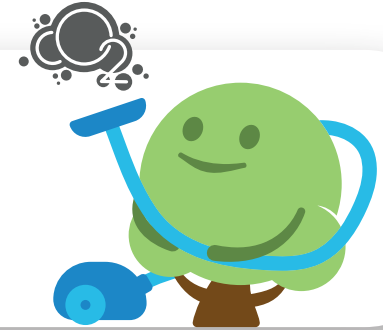




Absorption Plan, Leased and/or Owned

Absorption is, obviously, reached using ESG paradigms:

- Planting industrial hemp for high absorption
- Planting trees: fruit, wood, raw natural materials
- Seaside farming: sea weed and other cultures
- The next natural technology for CO2 absorption...

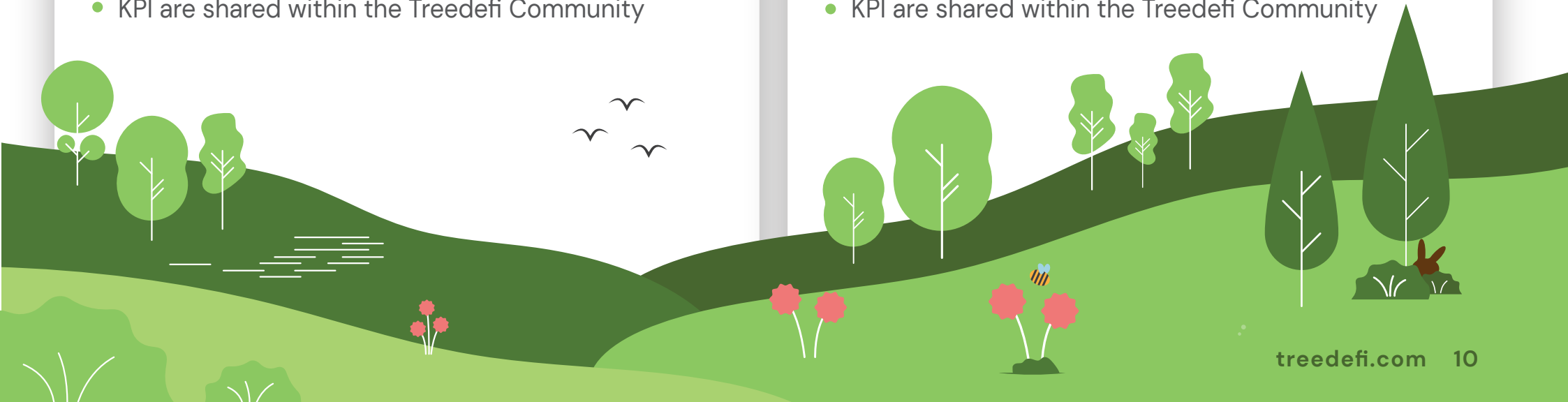


● If the land/sea is LEASED:

- Farmer rents the land and work with a sharing harvesting crop contract
- Treedefi gives initial financial investment (in USD)
- Production goes to farmer to increase the social ROI
- Farmer guarantee the production with specific KPI
- KPI are shared within the Treedefi Community

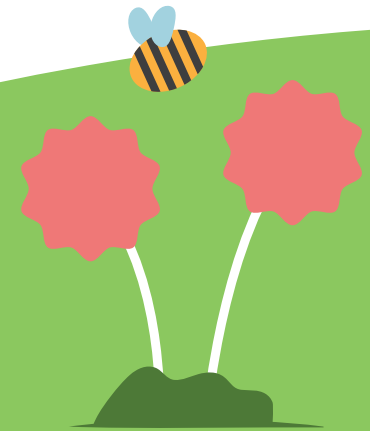
● If the land/sea is OWNED:

- Treedefi gives initial financial investment (in USD)
- Treedefi pays farmers and workforce
- Production goes 90% Treedefi and 10% to workforce to increase the social ROI
- Production with specific KPI to be shared on the web
- KPI are shared within the Treedefi Community





Thank you
info@treedefi.com



treedefi.com

treedefi.store

treedefi.foundation